

Rotary actuator in connection with a mounting kit for the motorisation of the most common mixing valves in HVAC systems

- Torque motor 10 Nm
- Nominal voltage AC/DC 24 V
- Control modulating DC 2...10 V
- Position feedback DC 2...10 V
- Running time motor 140 s


**Technical data**

<b>Electrical data</b>	Nominal voltage	AC/DC 24 V
	Nominal voltage frequency	50/60 Hz
	Nominal voltage range	AC 19.2...28.8 V / DC 19.2...28.8 V
	Power consumption in operation	1.5 W
	Power consumption for wire sizing	2.5 VA
	Connection supply / control	Cable 1 m, 4 x 0.75 mm <sup>2</sup>
	Parallel operation	Yes (note the performance data)
<b>Functional data</b>	Torque motor	10 Nm
	Operating range Y	DC 2...10 V
	Position feedback U	DC 2...10 V
	Position accuracy	±5%
	direction of rotation motor	clockwise rotation
	Manual override	temporary and permanent gear disengagement with rotary knob on the housing
	Angle of rotation	90°
	Running time motor	140 s / 90°
	Duty cycle value	75% (= active time 140 s / operating time 187 s)
	Sound power level, motor	37 dB(A)
	Position indication	Reversible scale plate
<b>Safety</b>	Protection class IEC/EN	III Safety Extra-Low Voltage (SELV)
	Degree of protection IEC/EN	IP40
	EMC	CE according to 2014/30/EU
	Mode of operation	Type 1
	Rated impulse voltage supply / control	0.8 kV
	Control pollution degree	3
	Ambient temperature	0...50 °C
	Non-operating temperature	-30...80 °C
	Ambient humidity	Max. 95% r.h., non-condensing
Maintenance	Maintenance-free	
<b>Weight</b>	Weight	0.46 kg
	Packaging size	Single-pack
<b>Housing colours</b>	Housing cover	orange
	Housing base	orange

**Safety notes**


- This device has been designed for use in stationary heating, ventilation and air conditioning systems and must not be used outside the specified field of application, especially in aircraft or in any other airborne means of transport.
- The actuator is to be protected against moisture. It is not suitable for outdoor applications.
- To calculate the torque required, the specifications supplied by the mixing valve manufacturer must be observed.
- Only authorised specialists may carry out installation. All applicable legal or institutional installation regulations must be complied during installation.
- The installer must check for correct principle of operation after installation.

## Safety notes

- The switch for changing the direction of rotation and operating range may only be adjusted by authorised specialists. The direction of rotation may not be changed when frost protection control is applied.
- The device does not contain any parts that can be replaced or repaired by the user.
- The device contains electrical and electronic components and must not be disposed of as household refuse. All locally valid regulations and requirements must be observed.
- Caution: Low voltage!

## Product features

<b>Mode of operation</b>	The actuator is connected with a standard modulating signal of DC 0...10V and drives to the position defined by the positioning signal.
<b>Simple direct mounting</b>	Simple direct mounting with only one screw. The stud bolt included in delivery serves as an anti-rotation device. The mounting position can be freely selected in steps of 90°.
<b>Manual override</b>	Manual override with lever possible. Temporary gear disengagement by pushing the rotary knob. Permanent disengagement by pushing and simultaneous rotating the rotary knob clockwise 90°.
<b>High functional reliability</b>	The actuator is overload protected and automatically stops when the end stop is reached. The actuator switches off for seven seconds in the case of blocking, then attempts to restart. If the blocked condition persists, the actuator attempts to restart once every two minutes a total of 15 times and subsequently only once every two hours.

## Accessories

	Description	Type
<b>Mechanical accessories</b>	Mounting kit for LK mixing valve	MS-NRA
	Installation kit for Barberi mixing valves	MS-NRB
	Mounting kit for Honeywell/Centra DR..MA mixing valves	MS-NRC
	Mounting kit for Honeywell/Centra DRU.. mixing valves	MS-NRC1
	Installation kit for ESBE mixing valves	MS-NRE
	Mounting kit for Hora mixing valve	MS-NRH
	Mounting kit for Siemens/Landis&Stäfa mixing valve	MS-NRL
	Installation kit for Lazzari mixing valves	MS-NRLA
	Mounting kit for Lovato mixing valve	MS-NRLO
	Mounting kit for Satchwell MB mixing valve	MS-NRS
	Mounting kit for Satchwell MBF mixing valve	MS-NRSF

## Electrical installation



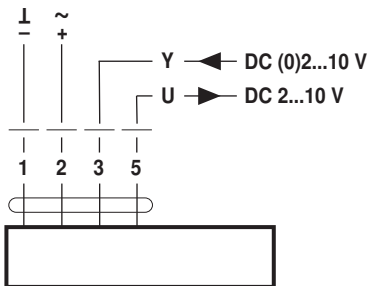
### Notes

- Connection via safety isolating transformer.

**Electrical installation**

**Wiring diagrams**

AC/DC 24 V, modulating



**Dimensions [mm]**

**Dimensional drawings**

