

Actuators IC 20, IC 50



Technical Information · GB

3 Edition 08.15



krom
schroder

- Continuous or three-point step control
- Easy to switch between Automatic and Manual mode
- Display of the valve position
- IC 50 for high torques
- IC 50 with selectable direction of rotation
- Actuators can be delivered ready installed on butterfly valves
- IC 20 delivered with linear flow control VFC ready installed
- IC 20..E, IC 50..E with electronic positioning function
- Adjustable motor behaviour in the event of cable discontinuity, for example



elster
Thermal Solutions

Contents

- Actuators IC 20, IC 50 1
- Contents 2
- 1 Application 4
 - 1.1 IC 20 6
 - 1.2 IC 50 6
 - 1.3 Examples of application 8
 - 1.3.1 Modulating control via three-point step signal 8
 - 1.3.2 Staged control via two-point step signal 8
 - 1.3.3 Modulating control with continuous input signal 8
 - 1.3.4 IC 20, modulating control with burner control unit BCU 9
 - 1.3.5 IC 20..E, continuous control with burner control unit BCU 10
 - 1.3.6 IC 50, three-point step control with burner control unit BCU 11
 - 1.3.7 IC 50..E, continuous control with burner control unit BCU 12
- 2 Certification 13
- 3 Function 14
 - 3.1 Automatic/Manual mode 14
 - 3.2 Three-point step control 15
 - 3.2.1 IC 20..T connection diagram 15
 - 3.2.2 IC 50..T connection diagram 15
 - 3.3 Continuous control 16
 - 3.3.1 IC 20..E connection diagram 16
 - 3.3.2 IC 50..E connection diagram 16
 - 3.4 Two-point step control 16
 - 3.5 IC..E display 17
 - 3.5.1 In Manual mode 17
 - 3.5.2 Low-fire/High-fire rate adjustment (in Manual mode only) 17
 - 3.5.3 Warnings and faults 17
 - 3.6 IC 20..E DIP switches 18
 - 3.6.1 Choosing the input signal 18
 - 3.6.2 Load impedance of the current input 18
 - 3.6.3 Two-point step control 18
 - 3.6.4 Behaviour in the event of cable discontinuity (4 – 20 mA) 18
 - 3.7 IC 50..E DIP switches 19

- 3.7.1 Choosing the input signal 19
- 3.7.2 Load impedance of the current input 19
- 3.7.3 Two-point step control 19
- 3.7.4 Behaviour in the event of cable discontinuity (4 – 20 mA) 19
- 3.7.5 Direction of rotation 19
- 4 Replacement possibilities for actuators 20
 - 4.1 GT 31 is to be replaced by IC 20 20
 - 4.2 GT 50 is to be replaced by IC 50 21
- 5 Selection 22
 - 5.1 Selection table 22
 - 5.2 Type code 22
 - 5.3 Butterfly valve torque, actuator running time 23
 - 5.3.1 IC 20 with BVG, BVA 23
 - 5.3.2 IC 20 with BVGF, BVAF 23
 - 5.3.3 IC 20 with BVH 24
 - 5.3.4 IC 50 with DKR 24
- 6 Project planning information 25
 - 6.1 Installation 25
 - 6.2 Cable selection 25
 - 6.3 Electrical connection 25
 - 6.3.1 IC 20..E, IC 50..E: three-point step control 25
 - 6.4 IC 50, IC 50..E: changing the direction of rotation 25
 - 6.5 Position feedback 26
 - 6.5.1 IC 20, IC 50 26
 - 6.5.2 IC 20..E, IC 50..E 26
 - 6.6 IC 20..E, IC 50..E, continuous control: adapting the input signal to the adjustment angle 26
 - 6.6.1 Automatic calibration 26
 - 6.6.2 Manual calibration 26
 - 6.6.3 Characteristic curve inversion 26

7 Accessories	27
7.1 IC 20: heat deflector	27
7.2 IC 20: adapter set for mounting onto a butterfly valve DKL, DKG	27
7.3 IC 20: "single application" attachment set	27
7.4 IC 20: potentiometer installation set	27
7.5 IC 50: heat deflector	28
7.6 IC 50: wall mounting bracket	28
7.7 IC 50: attachment sets	29
7.7.1 Axial mounting	29
7.7.2 Attachment with linkage	29
8 Technical data	30
8.1 IC 20, IC 20..E	30
8.2 IC 50, IC 50..E	31
8.3 Dimensions	32
9 Converting units	33
10 Maintenance	33
Feedback	34
Contact	34



IC 20



IC 50

1 Application

The actuators are designed for all applications that require precise, controlled rotary movement between 0° and 90°.

The combination of actuator and butterfly valve is designed for flow adjustment and for regulating flow rates. IC and butterfly valve or IC 20 and linear flow control VFC can also be delivered ready assembled.

The IC is controlled by a continuous signal or three-point step signal.

In addition to setting the Min. and Max. positions using infinitely adjustable switching cams, floating limit switches mean that additional switching positions such as for ignition and high-fire rate positions can be set.

A standard Service switch allows the device to be switched from Automatic to Manual mode and a position indicator which can be read from the outside drastically simplifies the commissioning procedure.

IC 20, IC 50

An integrated feedback potentiometer offers the option of monitoring the current position of the actuator. This checking function can be used in automation processes.

IC 20..E, IC 50..E

The behaviour of the actuator, e.g. if the input signal falls below the minimum limit in the event of cable discontinuity, can be set using DIP switches.

Fluctuations or interference in the input signal are suppressed by an adjustable potentiometer. In the case of continuous control, the input signal can be adapted to the minimum and maximum adjustment angles manually or automatically. This calibration process can be visualized using LEDs. The continuous signal offers the option of monitoring the current position of the actuator.



Roller hearth kiln in the ceramics industry

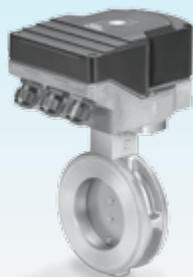


Forging furnace

1.1 IC 20

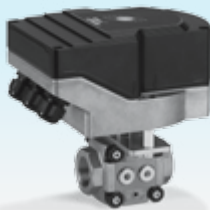
The actuator IC 20 can be mounted directly onto the butterfly valves BVG, BVGF, BVA, BVAF, BVH or BVHS. The combination IB.. is designed to adjust volumes of gas, cold and hot air and flue gas on gas and air appliances and flue gas lines. IB.. is designed for control ratios up to 10:1 and is suitable for regulating flow rates for modulating-controlled combustion processes.

See www.docuthek.com, Technical information bulletin BV.., IB...



IBG (IC 20 + BVG)

The combination of IC 20 and linear flow control VFC is called IFC and is designed to adjust volumes of gas and cold air on various appliances. IFC is designed for control ratios up to 25:1 and is suitable for regulating flow rates for modulating-controlled combustion processes.



IFC (IC 20 + VFC)

See www.docuthek.com, Technical information bulletin IFC.

1.2 IC 50

IC 50 is designed for applications with high torques of up to 30 Nm.

Actuator IC 50 and butterfly valve DKR are also delivered ready assembled up to nominal size 300.

The direction of rotation of the valve disc can be switched. The valve disc position can be read from the outside whereby the direction of rotation is indicated using a colour code.

Depending on the application, the actuator can be aligned to the butterfly valve using various attachment sets.

See www.docuthek.com, Technical information bulletin DKR, IDR

Axial mounting

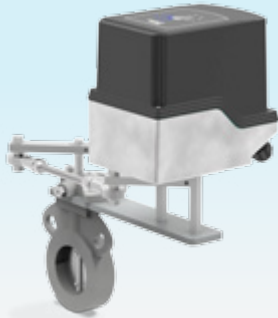
The actuator is axially aligned to butterfly valve DKR. Depending on the selected attachment set, the actuator can be mounted above or to the side of the pipe.



IDR..AU

Attachment with linkage

If the actuator is to be operated offset to the side of the butterfly valve, an attachment set with linkage can be used.



IDR..GD

This attachment set is used for butterfly valves with disc clearance DKR..D.



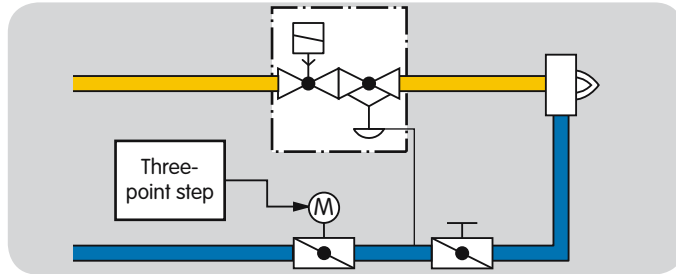
IDR..GAW

In the case of butterfly valves with stop bar DKR..A, an attachment set with shock suppressor must be used.

As of a medium temperature of $> 250^{\circ}\text{C}$, the actuator is to be protected by a heat deflector, see page 28 (IC 50: heat deflector).

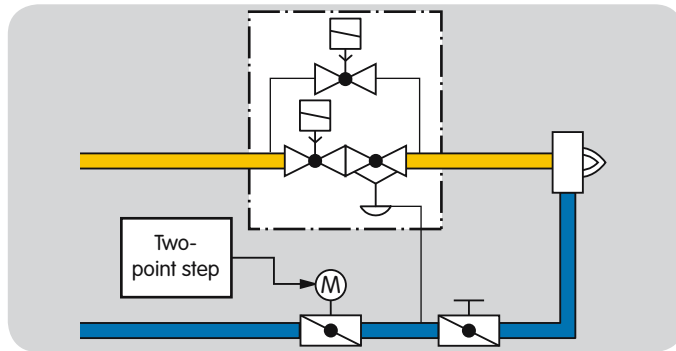
1.3 Examples of application

1.3.1 Modulating control via three-point step signal



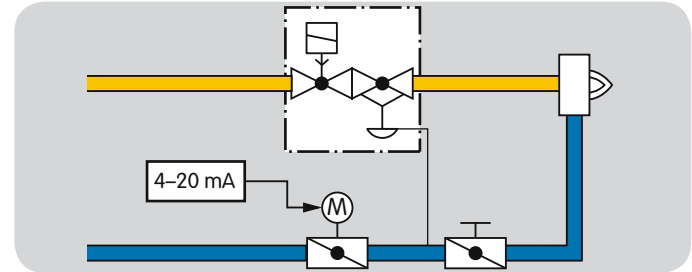
For processes that require high temperature accuracy and low circulation in the furnace. Actuator IC is controlled by a three-point step controller and moves the butterfly valve to the ignition position. The burner starts. The butterfly valve opens or closes between the low-fire/high-fire rate positions depending on the capacity demand of the burner. When the three-point step signal is disconnected, the butterfly valve stops at its current position.

1.3.2 Staged control via two-point step signal

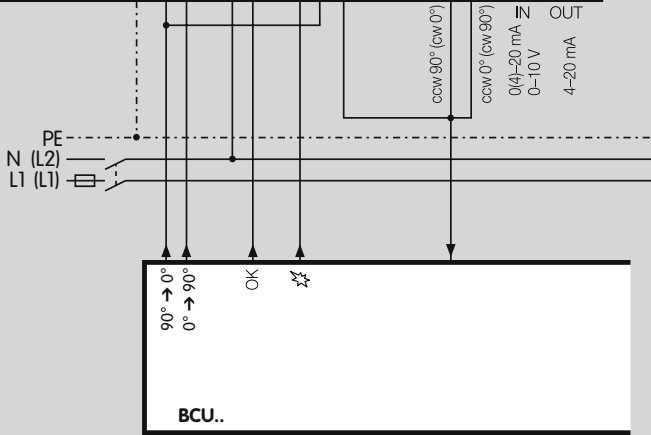
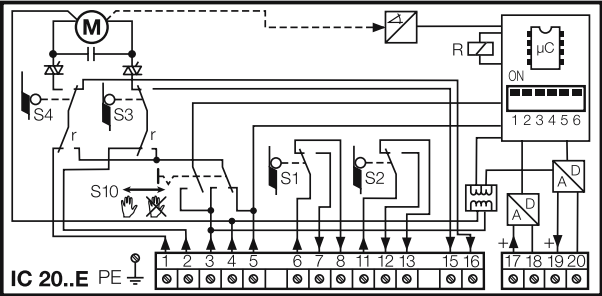


For processes that require a homogeneous temperature distribution in the furnace. Actuator IC..E is controlled by a two-point step controller and operates in On/Off or High/Low intermittent mode. The actuator closes when the voltage supply is interrupted.

1.3.3 Modulating control with continuous input signal



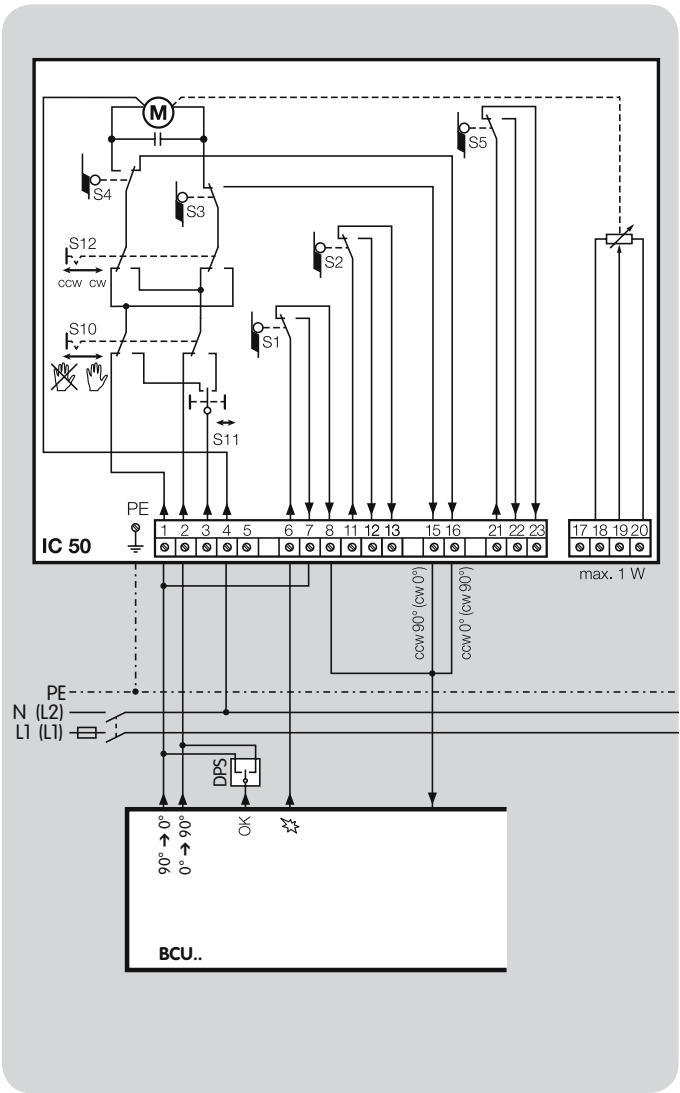
For processes that require high temperature accuracy and low circulation in the furnace. Actuator IC..E is controlled by a (0) 4–20 mA or 0–10 V signal. The continuous signal corresponds to the adjustment angle to be approached and offers the option of monitoring the current position of the actuator.



1.3.5 IC 20..E, continuous control with burner control unit BCU

The BCU controls pre-purge and moves the butterfly valve to pre-purge and ignition position.

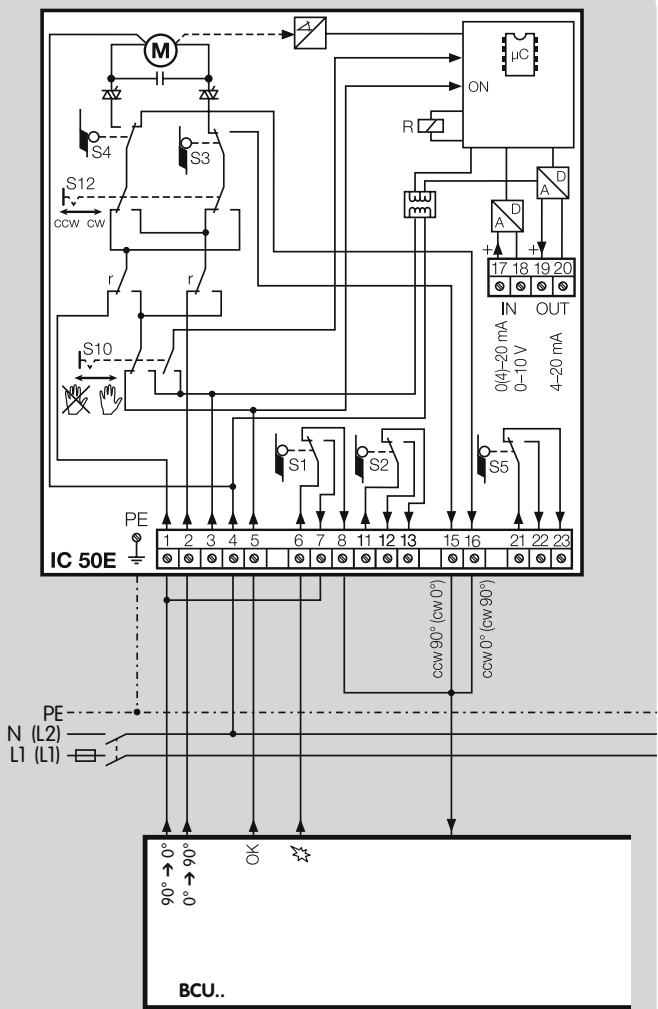
Once the BCU has started the burner, the modulation enable signal is issued via terminal 5 (OK). Actuator IC 20..E reacts to the (0) 4 – 20 mA or 0 – 10 V setpoint specification signals.



1.3.6 IC 50, three-point step control with burner control unit BCU

The BCU moves the butterfly valve to pre-purge and ignition positions. After pre-purge and burner start, the controller enable signal is issued to an external three-point step controller which positions the butterfly valve in accordance with the capacity demand.

Once the pre-purge or ignition position has been reached, a feedback signal is sent to the BCU.



1.3.7 IC 50..E, continuous control with burner control unit BCU

The BCU controls pre-purge and moves the butterfly valve to pre-purge and ignition positions.

Once the BCU has started the burner, the modulation enable signal is issued via terminal 5 (OK). Actuator IC 50..E reacts to the (0) 4 – 20 mA or 0 – 10 V setpoint specification signals.

2 Certification

Certificates – see Docuthek.

EU certified



Meets the requirements of the

- Low Voltage Directive (2006/95/EC),
- EMC Directive (2004/108/EC) on the basis of EN 60730.

Eurasian Customs Union



The product IC 20/IC 50 meets the technical specifications of the Eurasian Customs Union (the Russian Federation, Belarus, Kazakhstan).

3 Function

The actuator moves towards 0° or 90° if it is energized electrically at the related terminal. If the voltage is disconnected, the actuator stops at the current position. A high holding torque when de-energized renders additional braking elements superfluous. The low-fire and high-fire rates are adjusted using infinitely adjustable switching cams. An integrated feedback potentiometer (optional on IC 20) makes it possible to monitor the current position of the actuator.

IC..E

In normal operation, input "OK" is supplied with voltage. The setpoint device issues an actuating signal (0 (4)–20 mA, 0–10 V). The continuous signal corresponds to the adjustment angle to be approached (e.g. with a 0 to 20 mA signal, 10 mA correspond to a valve angle of 45°).

3.1 Automatic/Manual mode

Switchover between Automatic and Manual mode facilitates setting of the infinitely adjustable switching cams during commissioning. This enables precise settings even in the low-fire rate range.

The switching point is set directly on the cams with a screwdriver.

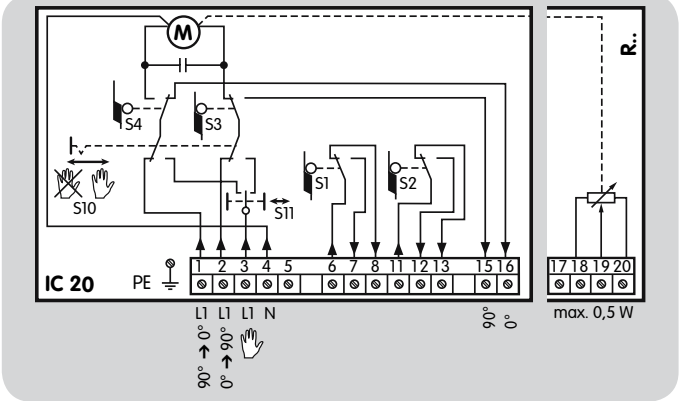
External devices can be activated or intermediate positions can be checked via additional, floating, infinitely adjustable switches. The IC 20 has two adjustable switching cams and the IC 50 has three.

3.2 Three-point step control

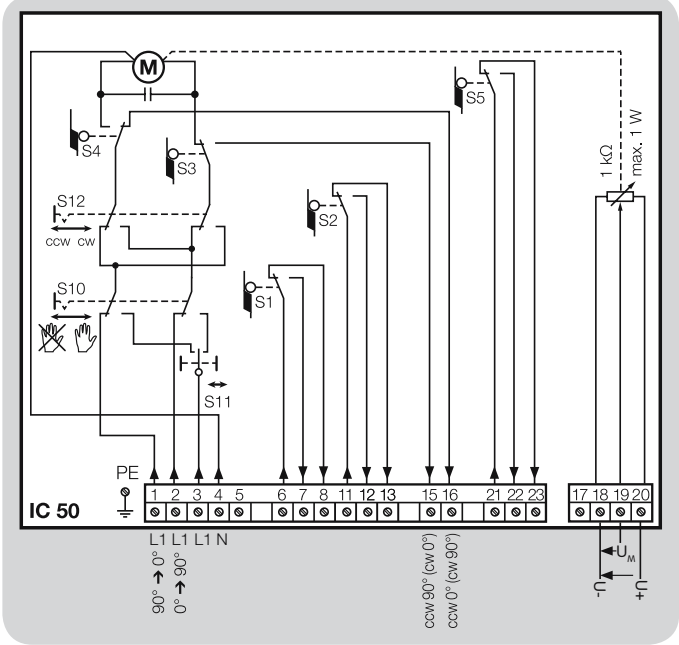
In the case of default setting "Closed": the butterfly valve opens when voltage is applied to terminal 2. The butterfly valve closes when voltage is applied to terminal 1.

See page 25 (Project planning information).

3.2.1 IC 20..T connection diagram



3.2.2 IC 50..T connection diagram

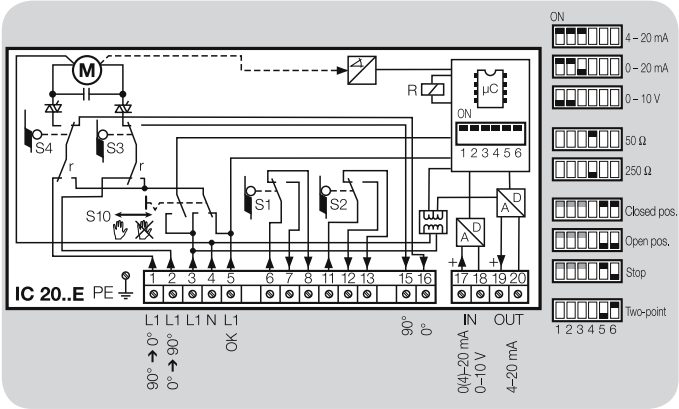


3.3 Continuous control

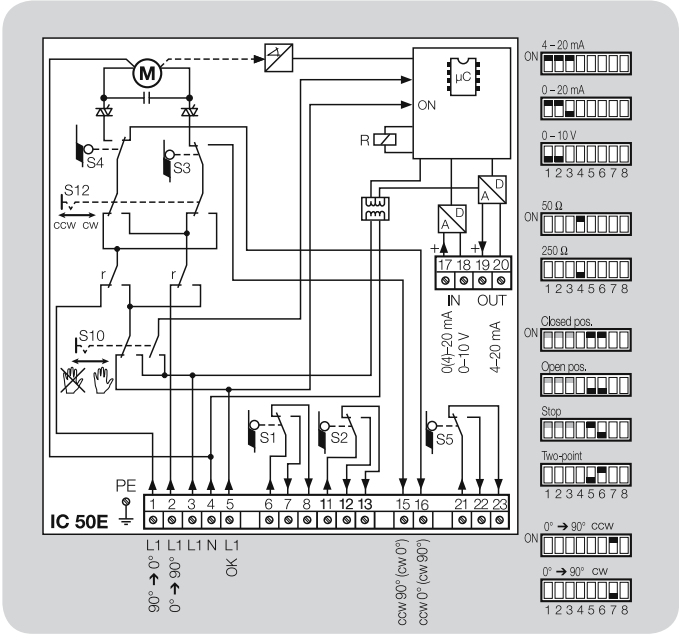
Following successful modulation enable via terminal 5 (OK), the actuator reacts to the setpoint specification (0 (4) – 20 mA, 0–10 V) via terminals 17 and 18. The pre-purge and ignition positions are controlled via terminals 1 and 2.

See page 25 (Project planning information).

3.3.1 IC 20..E connection diagram

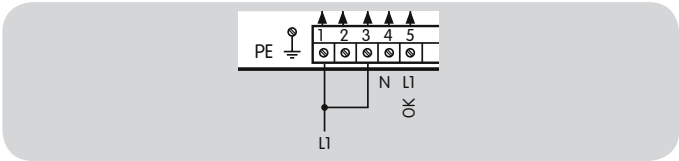


3.3.2 IC 50..E connection diagram



3.4 Two-point step control

Connect voltage to terminals 1 and 3. Set the DIP switches to 2-point step control. If an input signal is applied to terminal 5 (OK), the actuator opens. If no input signal is applied to terminal 5, the actuator closes.



3.5 IC..E display

3.5.1 In Manual mode

Blue LED	Red LED	Operating state
Lit	Off	Manual mode
Flashing	Flashing	Calibration (in Manual mode only)

3.5.2 Low-fire/High-fire rate adjustment (in Manual mode only)

Blue LED	Red LED	Operating state
Lit	On for 0.5 s	Min. value \geq max. value*
Off for ≤ 0.5 s	Off	Min. or Max. setting accepted

* Value will only be accepted, if the min or max button is pressed for another three seconds.

3.5.3 Warnings and faults

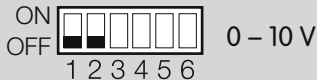
Blue LED	Red LED	Warning/ fault	Description	Cause
Off	Flashing light (1x)	Warning	The device is in 4–20 mA mode, the input signal is < 3 mA	Cable discontinuity on the 4–20 mA set-point input
Off	Flashing light (2x)	Warning	Many changes of direction, input signal oscillates	Hysteresis set too small
Off	Flashing light (3x)	Warning	Control range $< 1^\circ$	Device programming error (Min. and Max. positions)
Flashing light (1x)	Permanent light	Fault	Calibration not successful	Min. or Max. position has not been reached, motor defective, gear defective, potentiometer defective
Flashing light (2x)	Permanent light	Fault	Internal error	Unit defective

3.6 IC 20..E DIP switches

The input signals for the actuator can be set via DIP switches. DIP switch positions that are not indicated can be freely selected.

■ = switch position

3.6.1 Choosing the input signal

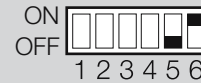


3.6.2 Load impedance of the current input



3.6.3 Two-point step control

Burner control: On/Off or High/Low



3.6.4 Behaviour in the event of cable discontinuity (4 – 20 mA)

Butterfly valve moves to CLOSED position



Butterfly valve moves to OPEN position



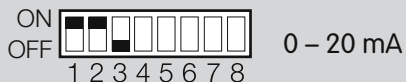
Butterfly valve stops



3.7 IC 50..E DIP switches

■ = switch position

3.7.1 Choosing the input signal



3.7.2 Load impedance of the current input



3.7.3 Two-point step control

Burner control: On/Off or High/Low



3.7.4 Behaviour in the event of cable discontinuity (4 – 20 mA)

Butterfly valve moves to CLOSED position



Butterfly valve moves to OPEN position



Butterfly valve stops



3.7.5 Direction of rotation

Butterfly valve opens clockwise CW



Butterfly valve opens anti-clockwise CCW



4 Replacement possibilities for actuators

4.1 GT 31 is to be replaced by IC 20

Type			Type
GT 31	Actuator	Actuator	IC 20
03	Running time [s/90°]: 3.7 s	Running time [s/90°]: 3.7 s	–
07	7.5 s	7.5 s	07
15	15 s	15 s	15
30	30 s	30 s	30
60	60 s	60 s	60
H	Mains voltage: 24 V AC, 50/60 Hz	Mains voltage: –	–
M	110/120 V AC, 50/60 Hz	120 V AC, 50/60 Hz	Q
T	220/240 V AC, 50/60 Hz	230 V AC, 50/60 Hz	W
1	Torque: 1.2 Nm	–	–
2	Torque: 2.5 Nm	Torque: 2.5 Nm	2
3	Torque: 3.0 Nm	Torque: 3.0 Nm	3
●	Three-point step control	Three-point step control	T
R	Two-point step control	Two-point step control	●
E	Continuous control	Continuous control	E
G	Additional switches with gold contacts	24–230 V position switch	●
○ ¹⁾	1000 Ω feedback potentiometer	1000 Ω feedback potentiometer	R10

Example

GT 31-30T3R

● = standard, ○ = available

¹⁾ See separate type label on the device

Example

IC 20-30W3

4.2 GT 50 is to be replaced by IC 50

Type			Type
GT 50	Actuator	Actuator	IC 50
03	Running time [s/90°]: 3.7 s	Running time [s/90°]: 3.7 s	03
07	7.5 s	7.5 s	07
15	15 s	15 s	15
30	30 s	30 s	30
60	60 s	60 s	60
H	Mains voltage: 24 V AC, 50/60 Hz	Mains voltage: 24 V AC, 50/60 Hz	H
M	110/120 V AC, 50/60 Hz	120 V AC, 50/60 Hz	Q
T	220/240 V AC, 50/60 Hz	230 V AC, 50/60 Hz	W
4	Torque: 3.7 Nm	Torque: 3 Nm	3
7	Torque: 7.5 Nm	Torque: 7 Nm	7
15	Torque: 15 Nm	Torque: 15 Nm	15
20	Torque: 20 Nm	Torque: 20 Nm	20
–	–	Torque: 30 Nm	30
–	–	Three-point step control	T
R	Two-point step control	Two-point step control	●
E	Continuous control	Continuous control	E
G	Additional switches with gold contacts	–	–
U	Reversed direction of rotation	1000 Ω feedback potentiometer	R10

Example

GT 50-15T20E

● = standard, ○ = available

Example

IC 20-15W20E

5 Selection

5.1 Selection table

	-03	-07	-15	-30	-60	W	Q	H	2	3	7	15	20	30	E	T	R10
IC 20	●	●	●	●	●	●	●		●	●					○	●	○ ¹⁾
IC 50	●	●	●	●	●	●	●	●	●	●	●	●	●	●	○	●	●

¹⁾ Optional on IC 20. If "none", this specification is omitted.

● = standard, ○ = available

Example

IC 50-15W30T

5.2 Type code

Code	Description
IC 20	Actuator for butterfly valves
IC 50	
-03 ¹⁾	Running time in s/90°: 3.7 ¹⁾ 7.5 15 30 60
-07	
-15	
-30	
-60	
W	Mains voltage (50/60 Hz): 230 V AC, 50/60 Hz 120 V AC, 50/60 Hz 24 V AC, 50/60 Hz
Q	
H	
2 ²⁾	Torque: 2.5 Nm ²⁾ 3 Nm 7.5 Nm ¹⁾ 15 Nm ¹⁾ 20 Nm ¹⁾ 30 Nm ¹⁾
3	
7 ¹⁾	
15 ¹⁾	
20 ¹⁾	
30 ¹⁾	
E	Continuous control
T	
R10	Feedback potentiometer

¹⁾ Only for IC 50

²⁾ Only for IC 20

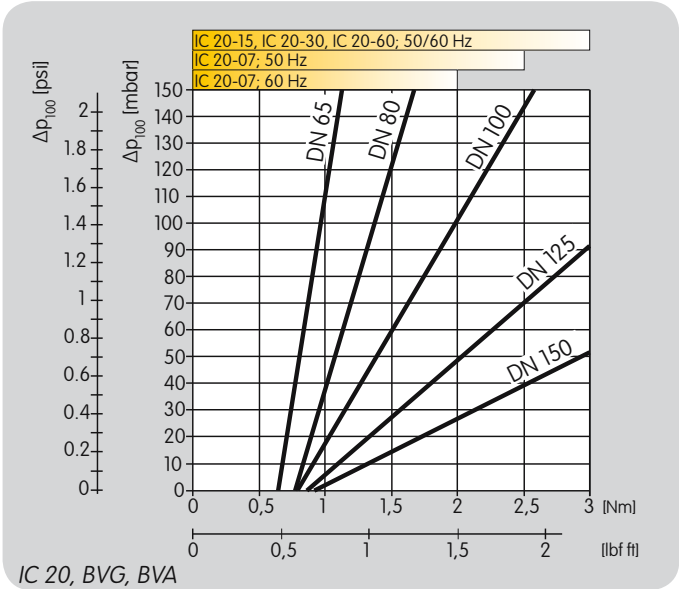
5.3 Butterfly valve torque, actuator running time

The characteristic curves relate to the maximum torque produced by the flow rate. In general, maximum torque is reached at approx. 70°.

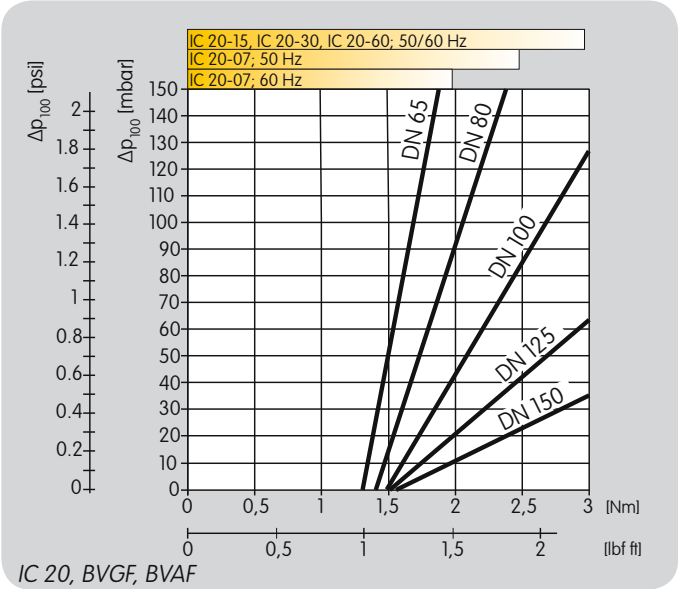
The running time of the actuator per 90° depends on the required torque.

The running time is reduced by a factor of 0.83 at a frequency of 60 Hz on the actuator.

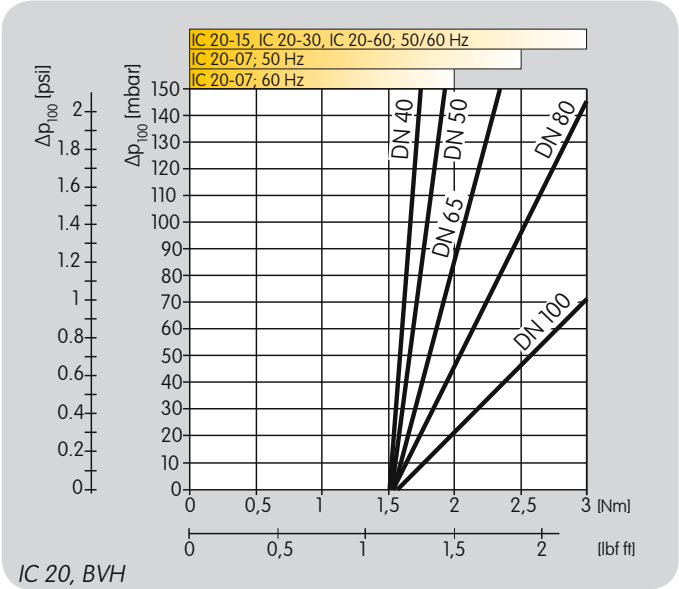
5.3.1 IC 20 with BVG, BVA



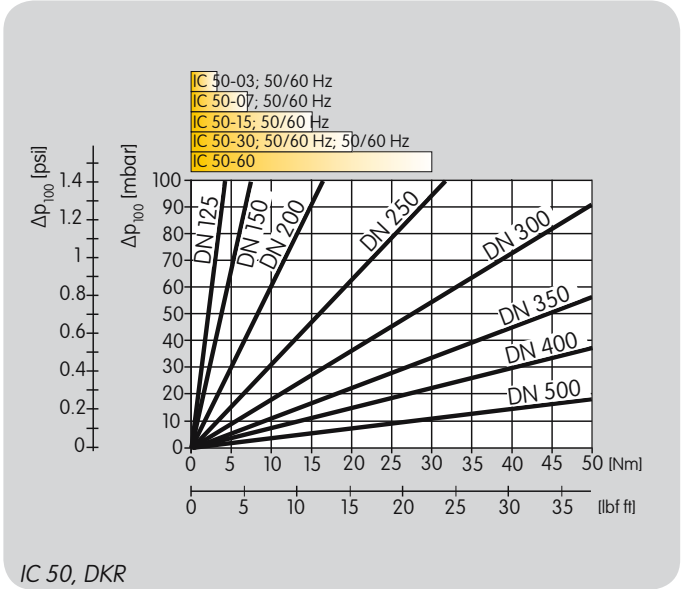
5.3.2 IC 20 with BVGF, BVAF



5.3.3 IC 20 with BVH



5.3.4 IC 50 with DKR



6 Project planning information

6.1 Installation

Installation in the vertical or horizontal position, not upside down.

If the actuator is used with hot air, the pipeline should be adequately insulated so as to reduce the ambient temperature. In order to avoid over-heating, the flanges and butterfly valve must not be insulated.

Use heat deflectors for a medium temperature of $> 250^{\circ}\text{C}$, see pages 27 (IC 20: heat deflector) and 28 (IC 50: heat deflector).

IC 20

In order to mount actuator IC 20 onto control elements other than DKL, DKG, BVA, BVAF, BVG, BVGF, BVH, BVHS or VFC, the attachment set for "single application" is required, see page 27 (IC 20: "single application" attachment set).

IC 50

Actuator IC 50 can be mounted directly onto a wall using a bracket, see page 28 (IC 50: wall mounting bracket).

Attachment sets are available for mounting to butterfly valve DKR, see page 29 (IC 50: attachment sets).

6.2 Cable selection

Install supply and signal lines separately.

Cables should be installed well away from high-voltage lines of other devices.

Observe EMC Directive for installation of signal lines.

Use cables with wire end ferrules.

Cable cross-section: max. 2.5 mm^2 .

6.3 Electrical connection

When operating two or more actuators in parallel, the three-point step controller (terminals 1 and 2) must be electrically isolated to avoid leakage currents. We recommend using relays.

Interference suppression capacitors installed in the system must only be used in conjunction with a series resistor so as not to exceed the maximum current—see page 30 (Technical data).

Running times are reduced by a factor of 0.83 at 60 Hz compared to 50 Hz.

6.3.1 IC 20..E, IC 50..E: three-point step control

When no voltage is applied to terminal 5, three-point step control is active. Two-point step control must be switched off at the DIP switch.

6.4 IC 50, IC 50..E: changing the direction of rotation

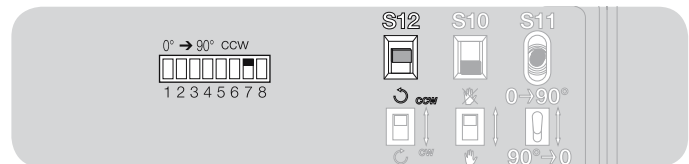
The function of switching cams S3/S4 changes if the direction of rotation ccw/cw (anti-clockwise/clockwise) is modified. The actuator is set to ccw at the factory.

ccw: S3 = maximum angle, S4 = minimum angle.

cw: S3 = minimum angle, S4 = maximum angle.

IC 50..E

When changing the direction of rotation, both DIP switch 7 and switch S12 must be in the same position (cw/ccw).

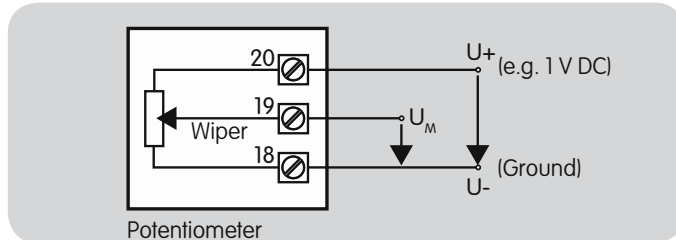


6.5 Position feedback

6.5.1 IC 20, IC 50

A feedback potentiometer offers the option of monitoring the current position of the actuator.

In the case of actuator IC 50, the feedback potentiometer is included in the delivery. In the case of actuator IC 20, the feedback potentiometer can be retrofitted, see page 27 (IC 20: potentiometer installation set).



It must be utilized as a voltage divider. The change in position of the potentiometer wiper (which corresponds to the actuator position) can be measured as a changing voltage between U_M and U_- .

Other circuit layouts produce measurement results that are inaccurate and do not remain stable over a long period of time or are non-reproducible. They also reduce the service life of the feedback potentiometer.

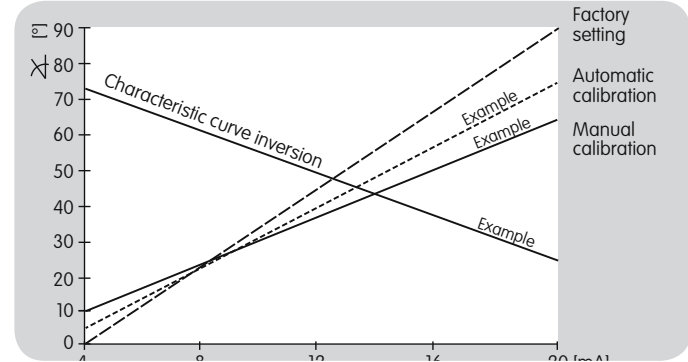
6.5.2 IC 20..E, IC 50..E

The IC..E offers the option of monitoring the current position of the actuator via the continuous 4–20 mA output signal.

Position feedback at terminals 15 and 16: interference suppression capacitors installed in the system must only be used in conjunction with a series resistor so as not to exceed the maximum current—see page 30 (Technical data).

6.6 IC 20..E, IC 50..E, continuous control: adapting the input signal to the adjustment angle

The continuous signal corresponds to the adjustment angle to be approached (e.g. with a 0 to 20 mA signal, 10 mA correspond to a valve angle of 45°).



6.6.1 Automatic calibration

If the factory setting is changed, the mA signal for the minimum and maximum opening angles must be confirmed via automatic calibration. The setpoint specification will then correspond to the setting of switching cams S3 and S4.

6.6.2 Manual calibration

If the mA signal for modulation between the minimum and maximum opening angles is to be used, the signal is set via manual calibration.

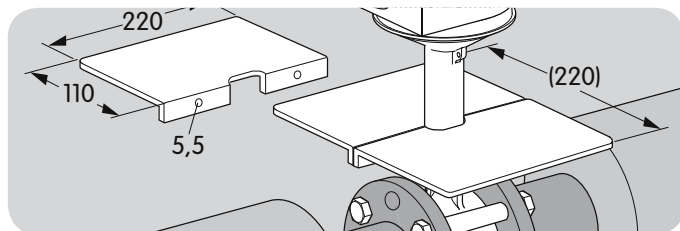
6.6.3 Characteristic curve inversion

If the mA value for low fire has to be greater than the mA value for high fire: press the min or max button until the red LED lights up briefly (approx. 0.5 seconds) and hold it in for approx. 3 seconds more until the blue LED goes out briefly (approx. 0.5 seconds).

7 Accessories

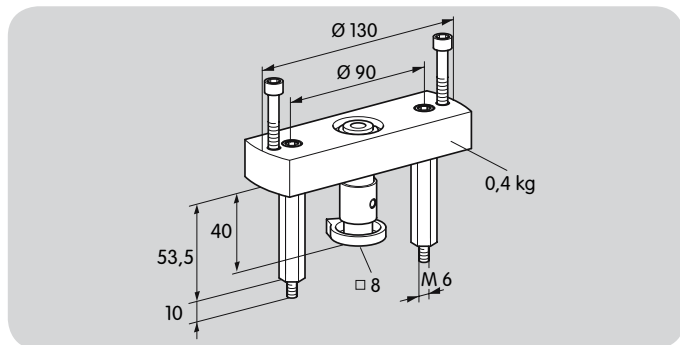
7.1 IC 20: heat deflector

Install heat deflectors in order to protect the actuator from overheating if the medium temperature is $> 250^{\circ}\text{C}$.



Order No.: 74921670

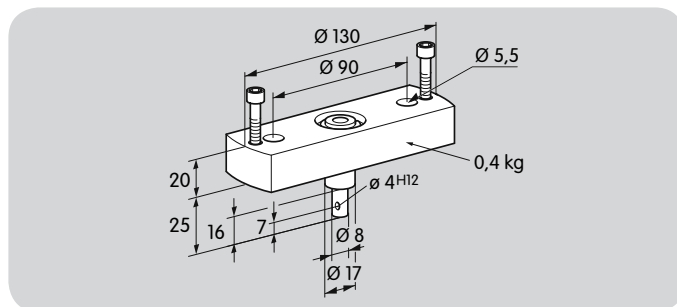
7.2 IC 20: adapter set for mounting onto a butterfly valve DKL, DKG



Order No.: 74921672

7.3 IC 20: "single application" attachment set

This attachment set is required if the actuator is mounted onto control elements other than DKL, DKG, BVA, BVAF, BVG, BVGF, BVH, BVHS or VFC.

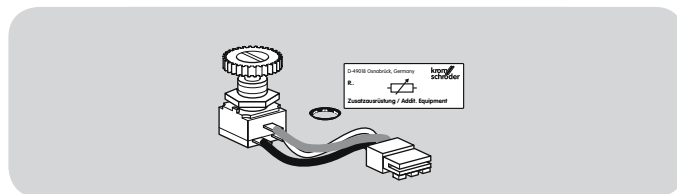


Order No.: 74921671

7.4 IC 20: potentiometer installation set

1000 Ω feedback potentiometer.

The power consumption of the potentiometer is max. 0.5 W.

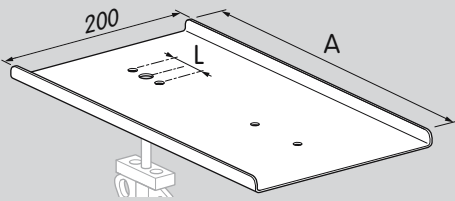


Order No.: 74921144

7.5 IC 50: heat deflector

Install heat deflectors in order to protect the actuator from overheating if the medium temperature is > 250°C.

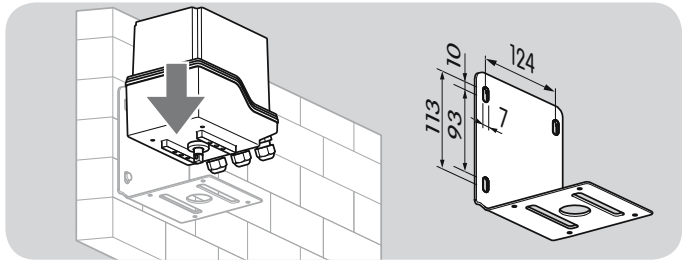
If used in conjunction with butterfly valves DKR, heat deflectors of various dimensions can be installed.



	L	A	Order No.
DKR 15–20	36	366	34340151
DKR 25–32	36	366	34340152
DKR 40–50	40	366	34340153
DKR 65–100	40	366	34340154
DKR 125	40	459	34340155
DKR 150–250	60	459	34340156
DKR 300	60	566	34340157
DKR 350	90	619	34340158
DKR 400–500	90	758	34340159

7.6 IC 50: wall mounting bracket

The actuator can be attached to a solid structure using the wall mounting bracket.



Order No.: 74924791

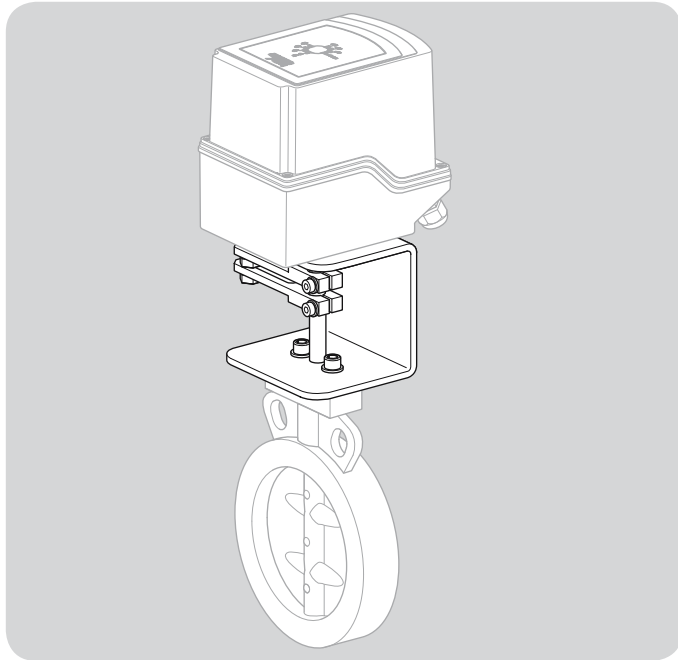
7.7 IC 50: attachment sets

Pre-assembled combinations of actuators, attachment sets and butterfly valves are available as models IDR up to nominal size DN 300.

The actuator, attachment set and butterfly valve can also be ordered separately.

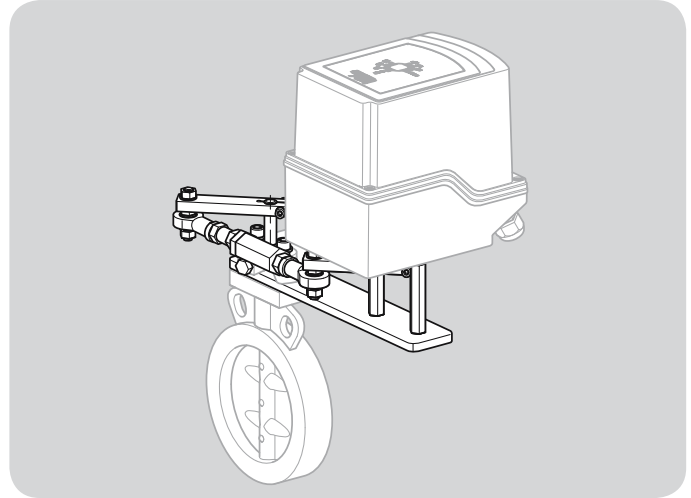
7.7.1 Axial mounting

Depending on the installation position of the butterfly valve DKR, actuator IC 50 can be mounted above or to the side of the pipe. The actuator can be mounted to the U bracket in increments of 90°.



7.7.2 Attachment with linkage

Depending on the type of butterfly valve (DKR..A = butterfly valve with stop bar, DKR..D = butterfly valve with disc clearance), the attachment set with linkage is available with or without shock suppressor.



For further information on the attachment sets, see www.docuthek.com, Technical information bulletin DKR.

8 Technical data

Screw terminals using the elevator principles for cables up to 4 mm² (single core cables) and for cables up to 2.5 mm² with wire end ferrules.

Angle of rotation: 0–90°, adjustable.

Holding torque = torque.

Contact rating of the position switches:

Voltage	Min. current (resistive load)	Max. current (resistive load)
24–230 V, 50/60 Hz	1 mA	2 A
24 V DC	1 mA	100 mA

Typical designed lifetime:

Switching current	Switching cycles	
	cos φ = 1	cos φ = 0.3
1 mA	1,000,000	–
22 mA ¹⁾	–	1,000,000
100 mA	1,000,000	–
2 A	100,000	–

¹⁾ Typical contactor application
(230 V, 50/60 Hz, 22 mA, cos φ = 0.3)

Three-point step signal to terminals 1 and 2:
minimum pulse duration: 100 ms,
minimum pause between 2 pulses: 100 ms.

Enclosure: IP 65.

Safety class: I.

Line entrance for electrical connection:
3 × M20 plastic cable glands.

Ambient temperature:

–20 to +60°C, no condensation permitted.

Storage temperature: –20 to +40°C.

8.1 IC 20, IC 20..E

Mains voltage:

120 V AC, –15/+10%, 50/60 Hz,

230 V AC, –15/+10%, 50/60 Hz.

Type	Running time [s/90°]		Torque [Nm]	
	50 Hz	60 Hz	50 Hz	60 Hz
IC 20-07	7.5	6.25	2.5	2
IC 20-15	15	12.5	3	3
IC 20-30	30	25	3	3
IC 20-60	60	50	3	3

IC 20

Power consumption:

4.9 VA at 50 Hz, 5.8 VA at 60 Hz.

Resistance of the feedback potentiometer: 1 k Ω , max. 1 W.

IC 20..E

Power consumption:

terminals 1, 2 and 5:

4.9 VA at 50 Hz, 5.8 VA at 60 Hz,

terminal 3:

8.4 VA at 50 Hz, 9.5 VA at 60 Hz,

in total not exceeding:

8.4 VA at 50 Hz, 9.5 VA at 60 Hz.

Position feedback output:

4–20 mA, galvanically isolated, max. 500 Ω load impedance.

The output is always active when supply voltage is applied to terminals 3 and 4.

Input: electrically isolated,

0 (4)–20 mA: load impedance switchable between 50 Ω and 250 Ω ,

0–10 V: 100 k Ω input resistance.

8.2 IC 50, IC 50..E

Mains voltage:

24 V AC, -15/+10%, 50/60 Hz,

120 V AC, -15/+10%, 50/60 Hz,

230 V AC, -15/+10%, 50/60 Hz.

Type	Running time [s/90°]		Torque [Nm] 50 Hz/60 Hz
	50 Hz	60 Hz	
IC 50-03	3.7	3.1	3
IC 50-07	7.5	6.25	7
IC 50-15	15	12.5	15
IC 50-30	30	25	20
IC 50-60	60	50	30

IC 50

Power consumption:

16 VA at 60 Hz, 13 VA at 50 Hz.

Resistance of the feedback potentiometer:

1 k Ω , max. 1 W.

IC 50..E

Power consumption: terminals 1, 2 and 5: 16 VA at 60 Hz, 13 VA at 50 Hz,

terminal 3: 19 VA at 60 Hz, 16 VA at 50 Hz,

in total not exceeding: 19 VA at 60 Hz, 16 VA at 50 Hz.

Feedback output:

galvanically isolated, max. 500 Ω load impedance.

The output is always active when mains voltage is applied to terminal 3.

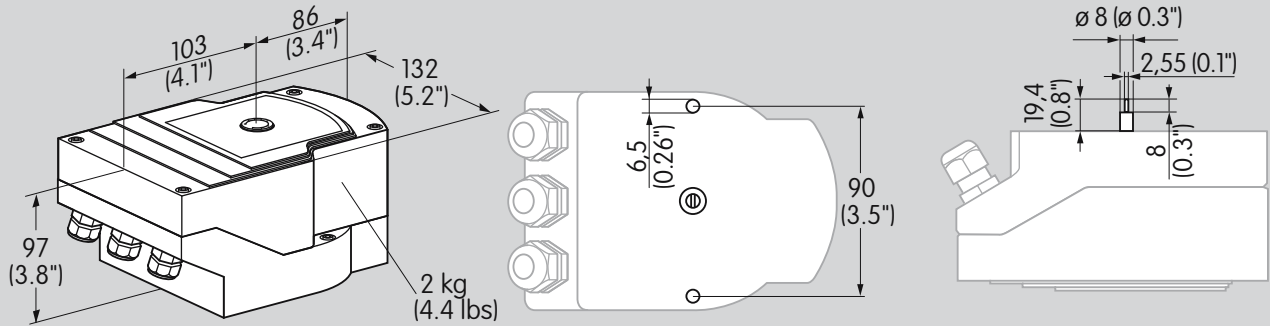
Input: electrically isolated,

4 (0)–20 mA: load impedance switchable between 50 Ω and 250 Ω ,

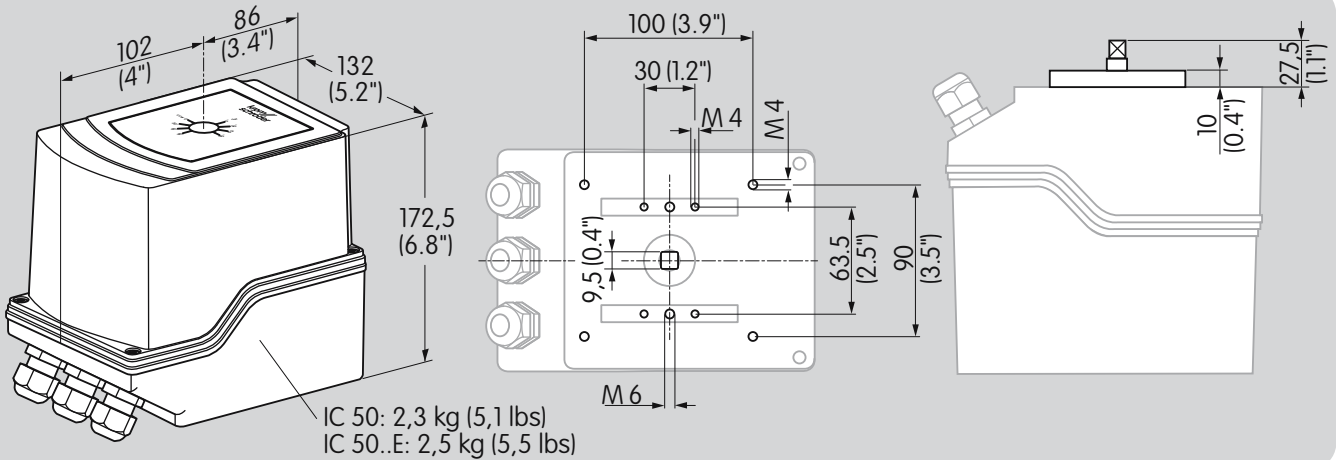
0–10 V: 100 k Ω input resistance.

8.3 Dimensions

IC 20



IC 50



9 Converting units

See www.adlatus.org

10 Maintenance

Actuators IC suffer little wear and require little servicing. We recommend a function check once a year.

Feedback

Finally, we are offering you the opportunity to assess this "Technical Information (TI)" and to give us your opinion, so that we can improve our documents further and suit them to your needs.

Clarity

Found information quickly
Searched for a long time
Didn't find information
What is missing?
No answer

Comprehension

Coherent
Too complicated
No answer

Scope

Too little
Sufficient
Too wide
No answer



Use

To get to know the product
To choose a product
Planning
To look for information

Navigation

I can find my way around
I got "lost"
No answer

My scope of functions

Technical department
Sales
No answer

Remarks



Contact

Elster GmbH
Postfach 2809 · 49018 Osnabrück
Strotheweg 1 · 49504 Lotte (Büren)
Germany
T +49 541 1214-0
F +49 541 1214-370
info@kromschroeder.com
www.kromschroeder.com

The current addresses of our international agents are available on the Internet:
www.kromschroeder.de/index.php?id=718&L=1

We reserve the right to make technical modifications in the interests of progress.
Copyright © 2015 Elster GmbH
All rights reserved.